

# COMMUNITY SERVICE BOOKLET



MIDDLE COUNTRY  
CENTRAL SCHOOL DISTRICT



2015-2016



# Community Service

2015-16 EDITION

## Middle Country Central School District

### Centereach High School

14 43<sup>rd</sup> Street, Centereach NY

- East Suite: 631.285.8140
- North Suite: 631.285.8180
- West Suite: 631.285.8160

### Newfield High School

145 Marshall Drive, Selden NY

- Guidance Office:  
631.285.8330

### Dawnwood Middle School

10 43<sup>rd</sup> Street, Centereach NY

- Guidance Office:  
631.285.8210

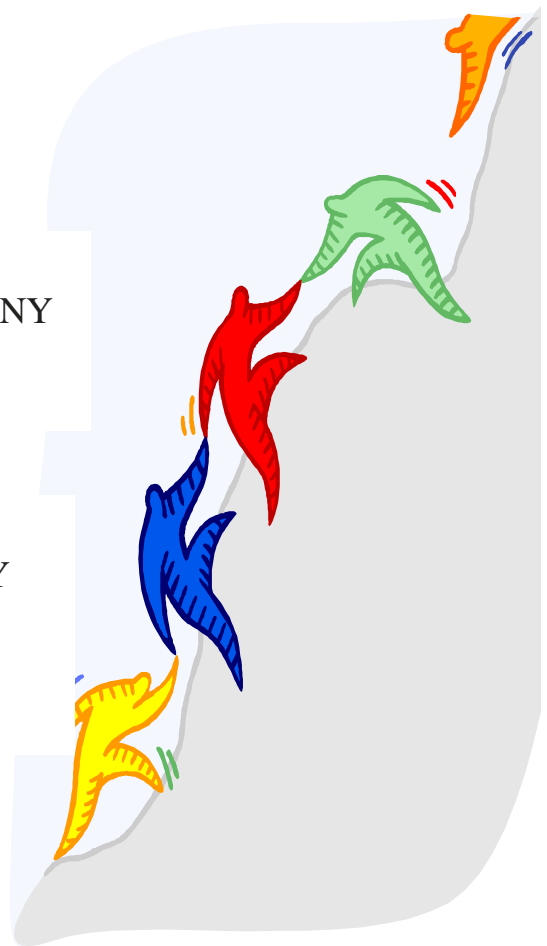
### Selden Middle School

22 Jefferson Ave, Selden NY

- Guidance Office:  
631.285.8410

### Dr. Donna Cooke

Director of Pupil Personnel Service & Guidance  
631.285.8850



## Attention

Our Guidance Departments are happy to provide this reference handbook in an effort to assist students who are eager to participate in community service.

*"The best way to find yourself is to lose yourself in the service of others."*

-Mahatma Gandhi





# What are MCCSD students doing in our community?

*Examples of actually current and former MCCSD students lending a helping hand.*

**Danielle K.** volunteers at **The American Cancer Society**. She has fundraised as well as set up for relay events.

**Mike Z.** volunteered at **Trick-or-Treat Street**. Mike set up rooms, painted faces and helped clean up after the event was over!

**Nick D.** volunteered at **Brookhaven Hospital**. Assisted with the inputting of

records and other clerical duties while receiving great hands on experience.

**Dereck F.** volunteered at the **Senior Citizens Dinner**. He served food and escorted seniors to and from their seats.

**Lauren D.** volunteers at **St. Charles Hospital**. Lauren assists nursing staff with a variety of patient needs.

**Neal P.** volunteers at **Habitat for Humanity**. He had the opportunity to go to Florida and build houses for those in need.

## COMMUNITY SERVICE FACTS: Students who serve



Youth volunteering has increased steadily over the past ten years, with 30% of youth participating in volunteer activities at least once a month.

Youth who volunteer are more likely to do well in school, graduate and vote.

*(Youth Volunteers: The benefits of community service by Molly Latham)*

## Guidelines for receiving community service credit.

Community service will be noted on transcript after 25 hours or more of recognized services per year. A student can be awarded transcript recognition for each year of high school.

Recognition for community service will be based on an approved verification form.

The school/organization/club/agency has the right to terminate the contract prior to its completion because of poor student performance, attendance and/or inappropriate behavior.

Recognition will be awarded for summer volunteer work as well as any work completed during the school year.

After completing 25 hours of community service, students must return the "community service verification form" to your counselor.

All students are eligible for this program; seniors completing the community service credit will be recognized at graduation after meeting the 100 hour requirement.

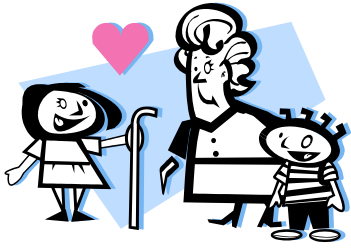
**Seniors must complete and submit verification forms no later than May 1<sup>st</sup>.**

Students are recognized at graduation for their participation when they complete a minimum of 100 hours of Community Service.

**\*\* Please note:** Verification forms can be attained from the Guidance office and on the district home page.

**\*\* If you have any questions,** please call or make an appointment with your guidance counselor.

## COMMUNITY SERVICE FACTS: Serving for yourself!



Youth who volunteer do so out of altruism, strongly agreeing with statements such as "I would like to help make the world a better place," and "It's important to do things for others." Only 5% of students became involved with volunteering through a school requirement.

(Top 6 Facts About Youth Volunteers By Joanne Fritz)

# Human Services

Definition: programs or facilities for meeting basic health, welfare, and other needs of a society or group, as of the poor, sick, or elderly.

Possible College Majors: Psychology, Sociology, Counseling, Law, Nursing, Police Science, Social Work, Child Development, etc.

Possible Career Opportunities: Case worker, Mental Health Counselor, Probation Officer, Child Advocate, Gerontology Aide, Registered Nurse, Social Worker, Police Officer, Fire Fighter, etc.



### Habitat for Humanity

<http://habitatnys.org/>

- Help build or rehabilitate a house for someone in need.

### Hospice Foundation of America

<http://www.hospicefoundation.org/>

- Volunteer for those with the most need!

### International Volunteer Programs Association

<http://www.volunteerinternational.org/>

- Take the opportunity to volunteer abroad.

### Locks of Love

<http://www.locksoflove.org/index.html>

- Non-profit organization that provides hairpieces to financially disadvantaged children in need.

### Long Island Volunteer Center

<http://www.longislandvolunteercenter.org/>

- Great resource for connecting with local agencies for one time or continuing events.

### Meals on Wheels

<http://www.mowaa.org/>

- Make a difference in the lives of seniors.

### National Domestic Violence Hotline

<http://www.thehotline.org/>

- Answer incoming hotline calls from victims of domestic violence and abuse. **(training required)**

### Peace Corps

<http://peacecorps.gov/>

- See the world while extending a helping hand.

### Project Linus

<http://projectlinus.org/index.html>

- Providing security through blankets.

### Rotary International

<http://www.rotary.org/>

- Humanitarian, intercultural, and educational programs to improve the human condition.

### Salvation Army

[http://www.salvationarmyusa.org/usn/www\\_usn\\_2.nsf](http://www.salvationarmyusa.org/usn/www_usn_2.nsf)

- Help meet needs within your community.

### RESPONSE of Suffolk County

<http://www.responsehotline.org/>

- Provide crisis counseling and additional resources. **(training required)**

### Special Olympics

<http://www.specialolympics.org/default.aspx>

- Year-round sports training and athletic competition for people with intellectual disabilities.

**MORE WEBPAGES COMING SOON**

### America's Promise

<http://www.americaspromise.org/>

- A chance to provide healthy starts, create effective education and is a true opportunity to help others.

### American Red Cross

<http://www.redcross.org/>

(Must be 14 years of age)

631.924.6700

- Learn to respond to disasters as well as participate in drives and other events.

### \*NEW\* Bricks 4 Kidz

<http://www.bricks4kids.com/easternlongisland>

- Teach younger children STEM concepts using Legos. This is run by Ms. Gilbert & Ms. June at CHS.
- Phone Number: 631.803.8379

### Do Something

<http://www.dosomething.org/>

- A chance to fight back against bullying.

## COMMUNITY SERVICE FACTS: It's a family affair



If family members  
volunteer, youth will  
too!

Among youth who are in  
families where both parents  
and siblings volunteer,  
86 percent volunteer  
themselves, and  
47 percent are regular  
volunteers. Only  
14 percent do not volunteer  
themselves.

([www.nationalserice.gov](http://www.nationalserice.gov)  
November 2005)

## Human Services

Definition: programs or facilities for  
meeting basic health, welfare, and other  
needs of a society or group, as of the  
poor, sick, or elderly.

Possible College Majors: Psychology,  
Sociology, Counseling, Law, Nursing,  
Police Science, Social Work, Child  
Development, etc.

Possible Career Opportunities: Case  
worker, Mental Health Counselor,  
Probation Officer, Child Advocate,  
Gerontology Aide, Registered Nurse,  
Social Worker, Police Officer, Fire  
Fighter, etc.



**Atria-South Setauket**  
631.473.8000

**Big Brothers/Big Sisters of LI**  
145 Sycamore Ave  
Islandia  
631.273.1469

**Centereach Junior Fire Dept.**  
95 Washington Avenue  
Centereach  
631.588.8652

**Habitat for Humanity (Suffolk  
County)**  
(Must be 16 years of age)  
643 Middle Country Road  
Middle Island  
631.924.4966 ext. 0

**Herstory Writers Workshop Inc.**  
2539 Middle Country Road  
Centereach  
631.676.7395

**Little Angel Fund Inc.**  
[www.littleangelfund.org](http://www.littleangelfund.org)  
631.736.2512

**John T. Mather Memorial Hospital**  
North Country Road  
Port Jefferson  
631.476.2749

**Make A Wish Foundation of Suffolk  
County, Inc.**  
1 Commack Loop  
Ronkonkoma  
631.585.9474 ext. 325

**Memorial Sloan-Kettering Cancer  
Center**  
650 Commack Road  
Commack  
212.639.2000

**Middle Country Public Library**  
101 Eastwood Boulevard  
Centereach  
631.585.9393

**Selden-Centereach Youth Association**  
1515 Middle Country Road  
Centereach  
631.732.2186

**Selden Junior Fire Dept.**  
Woodmere Place  
Selden  
631.732.1234

**St. Charles Hospital and  
Rehabilitation Center**  
200 Belle Terre Road  
Port Jefferson  
631.474.6365

**Suffolk County Police Explorers**  
(Ages 14-21)  
631.924.7000

**Sunrise Assisted Living of  
Smithtown**  
30 Route 111  
Smithtown  
631.724.2299

**Sunshine Prevention Center**  
(Must be 14 years of age to attend)  
468 Boyle Road  
Port Jefferson Station  
631.476.3099

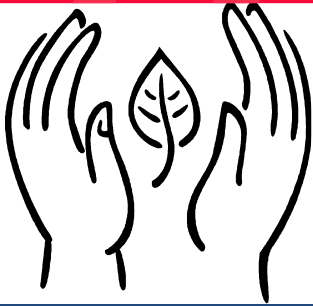
**Tri-Community & Youth Agency**  
310 W. Hills Road  
Huntington Station  
631.673.3303

**University Hospital & Medical  
Center at Stony Brook**  
Nicolls Road  
Stony Brook  
631.444.2610

**Ward Melville Heritage Youth  
Corps**  
[www.wmho.org](http://www.wmho.org)  
631.751.2244

**Woodhaven Home for Adults**  
1350 Route 112  
Port Jefferson Station  
631.473.3304 ext. 1124

## COMMUNITY SERVICE STORY: Help the environment



One of the most popular events is the Recyclabration. Held in the children's area at the Columbia Festival of the Arts, it has become an attraction for all ages. Volunteers collect materials for use in making artistic creations and set up tables at which participants can work. In fall 2005, hundreds of people crammed the tables making envelopes from old calendars, flowers out of plastic six-pack plastic rings, and art from CDs and phone wires. The opportunity is used to promote waste reduction, reuse, and recycling, to educate people about the importance of proper recycling.

([www.epa.gov](http://www.epa.gov))

## Environmental/Animal Service

Definition: maintaining environmental habitats and preserving animals.  
Prevention of animal cruelty.

Possible College Majors: Environmental studies, Environmental science, Environmental management, Animal science, biology, Veterinary science etc.

Possible Career Opportunities: Veterinarian, Biologist, Conservation Officer, Ecologist, Animal Behavior Specialist, Park Ranger etc.



### Actions without Borders

[www.idealists.org](http://www.idealists.org)

Volunteering opportunities in over 57,000 organizations around the world.

### American Littoral Society

Beach Clean Up  
800.449.0790

### ASPCA

[www.asPCA.org](http://www.asPCA.org)

Prevent cruelty to animals.

### EPA/Volunteer Water Monitoring

[www.epa.gov/volunteer/](http://www.epa.gov/volunteer/)

Monitor the conditions of your local streams, estuaries and wetlands.

### FamilyCares

[www.familycares.org/involve/default.t.cfm](http://www.familycares.org/involve/default.t.cfm)

Hands-on family projects that help others in need.

### Guide Dog Foundation for the Blind

[www.guidedog.org/voluntr/voluntr.htm](http://www.guidedog.org/voluntr/voluntr.htm)

Help improve the quality of life for people who are blind, visually impaired, or with special needs.

### Greenpeace

[www.greenpeace.org](http://www.greenpeace.org)

Hands-on family projects that help the environment.

### Hobbs Farm

178 Oxhead Road  
Centereach  
631.928.7375

### The Nature Conservancy

[www.nature.org/volunteer/?src=16](http://www.nature.org/volunteer/?src=16)

Protecting nature, preserving life.

### Pal-O-Mine Equestrian

[www.pal-o-mine.org/volunteer.php](http://www.pal-o-mine.org/volunteer.php)

Pal-O-Mine Equestrian is a therapeutic horseback-riding program dedicated to teaching horseback-riding to individuals with disabilities.

### \*NEW\* Student Taking Action for Tomorrow's Environment

[www.avalonparkandpreserve.org/STATE](http://www.avalonparkandpreserve.org/STATE)

Introduces students to a wide variety of nature centered projects and stewardships.

### Youth Service America

<http://ysa.org>

Building a global culture of engaged youth committed to a lifetime of service.



## COMMUNITY SERVICE QUOTES: What they say



"Everybody can be great...because anybody can serve. You don't have to have a college degree to serve. You don't have to make your subject and verb agree to serve. You only need a heart full of grace. A soul generated by love."  
-Martin Luther King Jr

**Blessed Hope Baptist Church**  
3656 Route 112  
Coram  
631.696.3113

**Centereach Bible Church**  
170 North Coleman Road  
Centereach  
631.732.3283

**Christ Community Church  
Reformed**  
66 Pembroke Drive  
Stony Brook  
631.751.2242

**Calvary Baptist Church**  
324 Jayne Boulevard  
Port Jefferson Station

**First United Methodist Church**  
603 Main Street  
Port Jefferson  
631.473.0517

## Religious Service

Possible College Majors: Religious studies, Theology, Philosophy, Biblical Studies, Anthology, Church Music, Pastoral Studies etc.

Possible Career Opportunities: Clergy, Peace Corp, Journalist, Teacher, Counselor, Director in various programs etc.



**Grace & Truth Church**  
26 Westfield Road  
Coram  
631.732.3223

**Greek Orthodox Church of the  
Assumption**  
430 Sheep Pasture Road  
Port Jefferson  
631.473.0894

**Hope Lutheran Church**  
46 Dare Road  
Selden  
631.732.2511

**New Beginnings Christian Center**  
241 Middle Country Road  
Coram  
631.736.7000

**St. Gerard Majella CCD**  
300 Terryville Road  
Port Jefferson Station  
631.928.2550 ext.230

**St. James Episcopal**  
260 Beaver Dam Road  
Brookhaven  
631.286.0726

**St. Margaret of Scotland**  
81 College Road  
Selden  
631.698.0798

**St. Mark's Episcopal Church**  
208 Jamaica Avenue  
Medford  
631.475.7406

**St. Paul's Evangelical Lutheran  
Church**  
309 Patchogue Road  
Port Jefferson Station  
631.473.2236

**Unitarian Universalist Fellowship  
at Stony Brook**  
338 Nicolls Road  
Setauket  
631.751.0297

**United Methodist Church**  
729 Hawkins Avenue  
Lake Grove  
631.588.5856

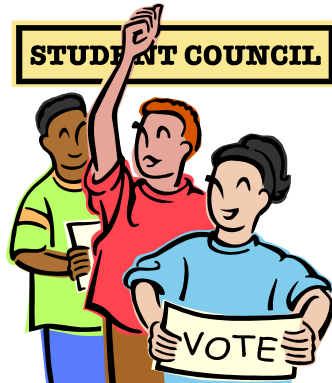
**North Shore Jewish Center**  
385 Old Town Road  
Port Jefferson Station  
631.928.3737

**Temple Beth Emeth**  
52 Mount Sinai Avenue  
Mount Sinai  
631.928.4103

**Young Israel of Coram Jewish  
Center**  
981 Old Town Road  
Coram  
631.698.3939

**Temple Isaiah**  
1404 Stony Brook Road  
Stony Brook  
631.751.8518

## COMMUNITY SERVICE FACTS: By the numbers



Current polls show that over 50 percent of high school and college-age youth performed community service within the past year, with nearly 6 in 10 volunteering at least once a month. About 61 million people volunteered last year, about 26% of the US population, for an estimated total of 8.1 billion hours valued at \$152 billion.

*(The politics of community service in the US by Nancy Hanover)*

## Political Service

Definition: programs or facilities for in favor of a political party or group.

Possible College Majors: Political Science, Law, History, Urban Studies, etc.

Possible Career Opportunities: Financial advisor, Economic analyst, Lawyer, Politician, Government positions, etc.

### The Democratic Party

[www.democrats.org/about/our-party](http://www.democrats.org/about/our-party)  
Help support America's Democratic Party.

### The Republican Party

[www.republicans.org](http://www.republicans.org)  
Help support America's Republican Party

Much more coming soon!

Continue to grow and help  
your community!